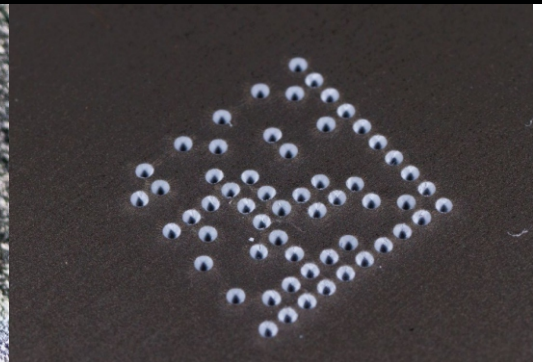


IMPACT MARKING STATIONS

DOT PEE N SOLUTION

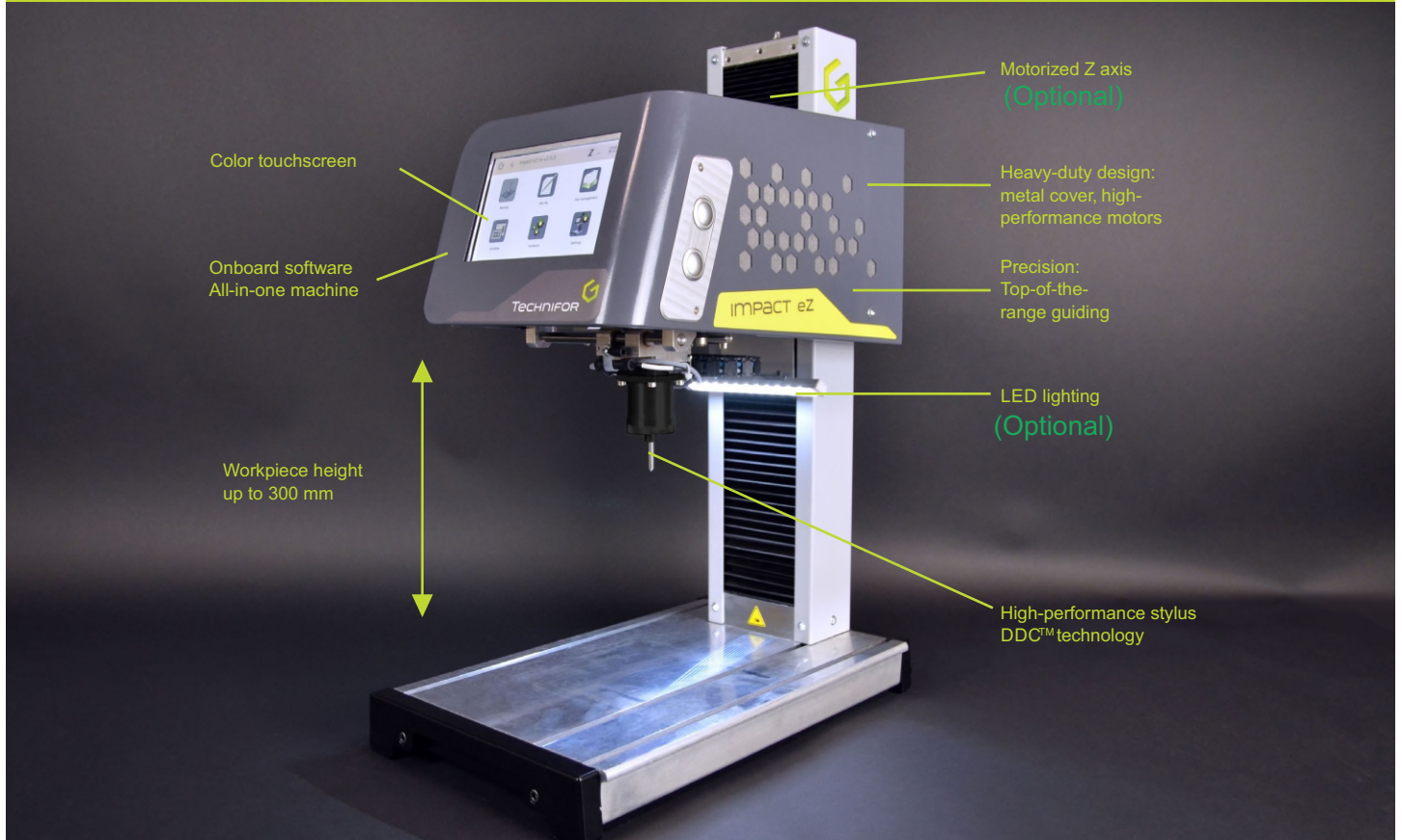


BENCH TOP RANGE



Big City Manufacturing
7561 Morley St.
Houston, TX 77061
Phone: 713-649-7769
Toll Free: 1-800-373-7769
www.MetalTags.com

IMPACT DOT PEEN MARKING STATION



TOUCH & MARK

Plug-n-play design allows marking the moment your machine is out of the box! The IMPACT is a totally standalone machine with onboard traceability software. Its intuitive touch interface makes it easy to configure and master. So it facilitates the development of a unique identification system for your workpieces and reduces the risk of error. The IMPACT capitalizes on long experience in the field of industrial traceability.



I-SENSE (optional)

With the motorised Z axis, it has never been so easy to adjust the Z axis. The I-Sense function detects the surface of the workpiece automatically adjusts the height of the Z axis and starts marking with no intervention on the part of the operator. Several adjustment modes are available: automatic mode (I-Sense), programmable mode and normal mode, which allows manual adjustment by means of buttons located on the side of the machine.



DYNAMIC DOT CONTROL (DDC)

A perfect result every time! The IMPACT features DDC™ (Dynamic Dot Control) technology. This enables automatic adjustment of point density according to the required size and depth of marking. Your markings are visible and of high quality, irrespective of your application. Two adjustment modes available: automatic and manual.



Big City Manufacturing
 7561 Morley St.
 Houston, TX 77061
 Phone: 713-649-7769
 Toll Free: 1-800-373-7769
 www.MetalTags.com

TECHNICAL CHARACTERISTICS

	IMPACT P \$5895.00	IMPACT EZ P \$6895.00	IMPACT M \$6845.00	IMPACT eZm \$7795.00
	Pneumatic	Pneumatic	Electromagnetic	Electromagnetic
Z axis	Manual	Motorized	Manual	Motorized
I-Sense technology	-	-	-	YES
Dynamic Dot Control (DDC)	-	-	YES	YES
Small characters: 0.02 inch (0.5 mm)	-	-	YES	YES
Marking field	3.9 x 4.7 inches (100 x 120 mm)			
Z travel	11.8 inches (300 mm)			
Character height	0.11 - 3.9 inches (3 - 100 mm)			
Marking applications	Texts, logos, 2D codes (DataMatrix, QR codes etc.)			
Communication	Ethernet TCP/IP, RS232, USB, FTP, dedicated Inputs/Outputs			
Power supply	Universal: 100-240 V AC			
Material hardness	≤ 62 HRC (marks most metals)			
Weight & dimensions (l x w x h)	57.3 lbs (26 kg) 16.9 x 10.6 x 27.7 inches (430.9 x 270 x 704 mm)			
Software	T08 - onboard software			

Software capabilities

- >>Serialization
- >>Automatic time stamping
- >>Counters
- >>Duplication control
- >>Marking result preview
- >>Link to a database (CSV, Excel, Access)
- >>Marking history

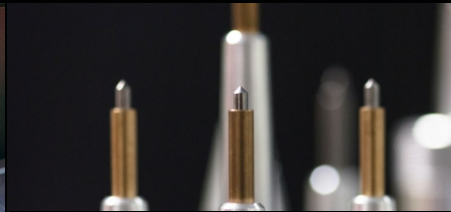
Some of the optional Accessories



Rotary device: accessory for cylindrical workpieces



Hand-held scanner for instantaneous reading of markings



Stylus range



Laser pointer: positioning assistance



Protective boot



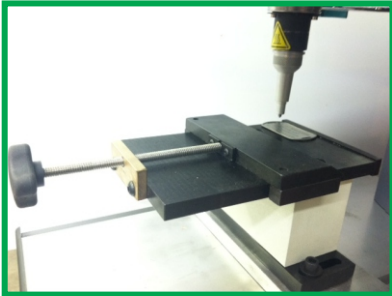
Positioning with magnetic clamping



Big City Manufacturing
 7561 Morley St.
 Houston, TX 77061
 Phone: 713-649-7769
 Toll Free: 1-800-373-7769
 www.MetalTags.com

IMPACT Accesories

NAMEPLATE FIXTURES

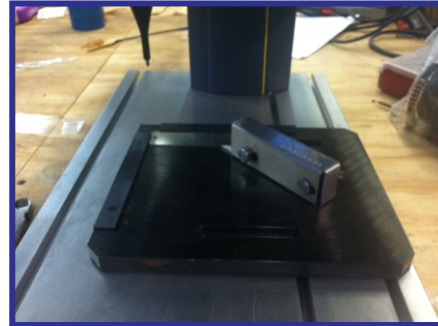


Manual nameplates vise

Holds up to 4" x 4" nameplate with adaptor to attach to base

If you are considering this vise, please submit a sample of your nameplate to make sure it is compatible

PART # 55427



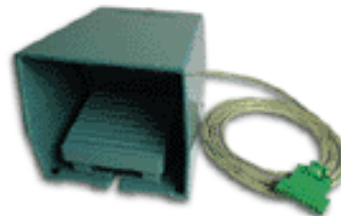
Nameplate holder Magnetic clamp

Use both parts tags or nameplates the plate provides a metal platform to mark the nameplate on and a clamp, held in place with magnetic force, is to hold the nameplate in place

79032
PLATE KIT



PART # 51417
T-NUTS



52713 FOOTSWITCH XL

Industrial footswitch
 This heavy-duty footswitch is used for launching hands-free marking in harsh environments.
 Products: P5000



52717 control box

Start/Stop switch box.
 user typically uses keyboard
 this allows easier operation



Big City Manufacturing

7561 Morley St.
Houston, TX 77061

Phone: 713-649-7769
Toll Free: 1-800-373-7769

www.MetalTags.com

IMPACT Rotary Devices



RD1

Weight of the part to mark <4kg

- Maximum inertia: 17.09 lb.in² (50 kg.cm²)
- External Clamping: from 0.12 to 2.99" (3 to 76mm)
- Internal clamping: from 0.91 to 3.56" (23 to 98mm)
- Rotation speed: from 5 to 240 turns/min

RD2

- Part maximum inertia time:
With chuck: 3400Kg.cm²
Without chuck: 3500 Kg.cm²
- Rotation speed: From 3 to 180 turns/min
- Clamping:
Exterior: Ø from 30 to 152 mm (1.18" to 5.98")
Interior: Ø from 3 to 125 mm (0.12" to 4.92")



Big City Manufacturing

7561 Morley St.
Houston, TX 77061

Phone: 713-649-7769
Toll Free: 1-800-373-7769

Manufacturing www.MetalTags.com

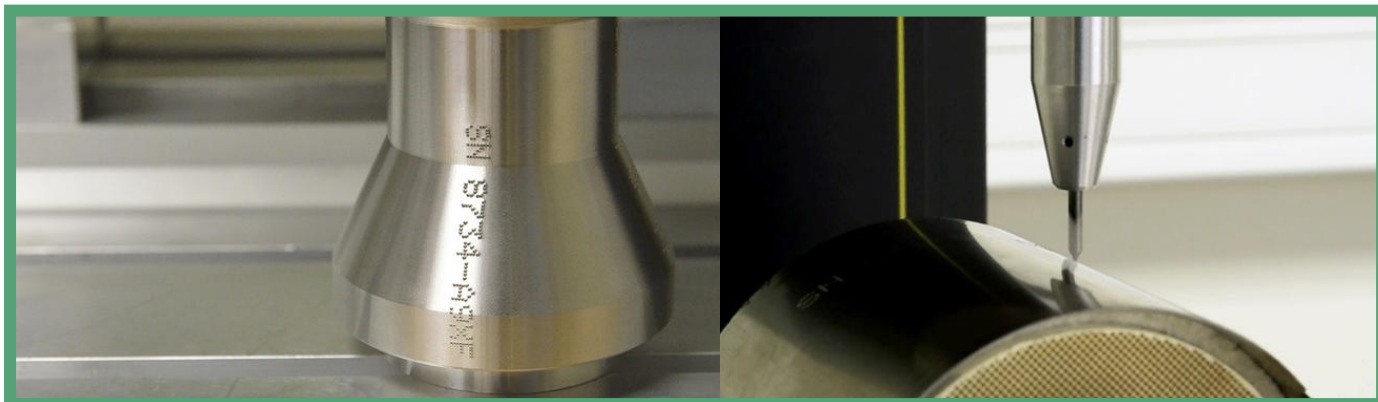
FOR USE ONLY WITH
IMPACT P and IMPACT EZP **3d Stylus**

3D Stylus

Accessories for pneumatic dot peen marking machines

Easily mark the side of the part with no adjustment!

- The biggest range on the market
- Easy integration into production lines
- Reduced installation times and costs
- Precision and quality of datamatrix codes



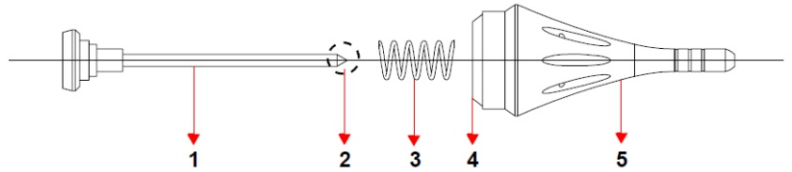
Mark on the circumference of cylindrical parts without part rotation system

FOR USE ONLY WITH
IMPACT P and IMPACT EZP

Power :	Pneumatic
Compressed air pressure:	3 bars (44 psi)
Working distance:	2-18 mm, can adjust up to 5/8 surface variation!!
Robustness:	Strengthened bearings and carbide tip
Tip angles available:	60 - 90 - 120° (60 is standard)
Range compatibility:	Available on new machines and on machines already installed




Big City Manufacturing
 7561 Morley St.
 Houston, TX 77061
 Phone: 713-649-7769
 Toll Free: 1-800-373-7769
 www.MetalTags.com



- 1 : Point
- 2 : Carbide insert for stylus PN12
Carbide monoblock for stylus PN22
- 3 : Spring
- 4 : O-ring
- 5 : Body



Pneumatic Stylus PN22 for deeper marking; also used on cast or rough metals
 For use in the M3000p, P3000p, or P5000p Pneumatic and IMPACT P and IMPACT ez P

AIR

part no.	description		
49058	PN22 Stylus Assembly: Includes Body, Point, O-ring, and Spring		
51909	RPN22 Replacement Stylus (1) standard 60 deg		standard tip
74811	RPN22 Replacement Stylus 90 deg	See drawing	
52554	RPN22 Replacement Stylus 120 deg	See drawing	
51954	REPLACEMENT BODY (5)	See drawing	
52748	O-ring and Spring (3)	See drawing	

PN12 for lighter marking on plastics, machined surfaces, and thin materials
 For use in the M3000p, P3000p, or P5000p Pneumatic and IMPACT P and IMPACT ez P

AIR

50723	PN12 Stylus Assembly:		
51908	RPN12 Replacement Stylus standard 60 deg		standard tip
75469	RPN12 Replacement Stylus 90 deg	See drawing	
52553	RPN12 Replacement Stylus 120 deg	See drawing	
51953	REPLACEMENT BODY (5)	See drawing	
55124	O-ring and Spring (3)	See drawing	

Stylus tips for: Impact M, Impact ezM, Xm700 and Propen M7000

Electric

73067	M2S-90+	complete stylus assembly	
73508	M2S-60+ PIN	Pin only 60 deg.	
73533	M2S-90+ PIN	Pin only 90 deg.	standard tip
73509	M2S-120+ PIN	Pin only 120 deg.	
73296	M2S repair kit	O-ring, washer & Spring	